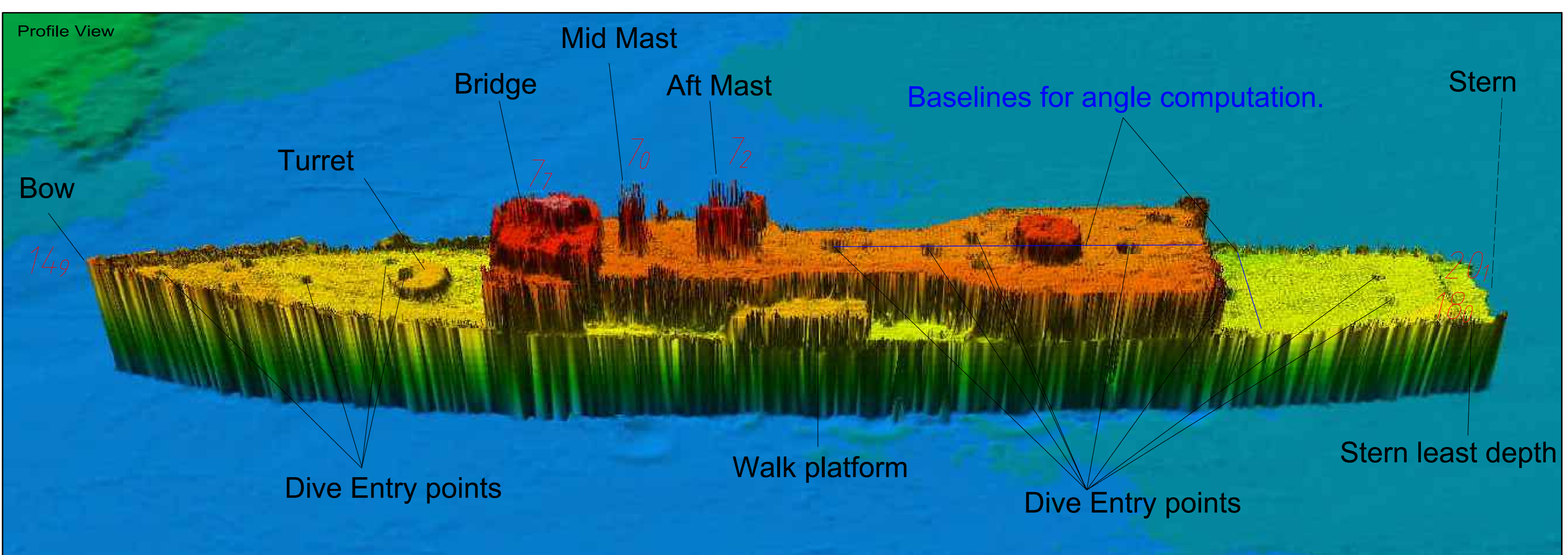


MGA	WGS84		Depth	Location		
	Easting	Northing			Latitude	Longitude
HMAS Canberra	285,159.9	5,758,006.6	-38°18'01.17" S	144°32'35.24" E	16.9	Bow
	285,179.3	5,758,044.9	-38°17'59.94" S	144°32'36.08" E	7.7	Bridge
	285,184.9	5,758,053.5	-38°17'59.67" S	144°32'36.32" E	7.0	Mid Mast
	285,188.6	5,758,059.4	-38°17'59.48" S	144°32'36.47" E	7.2	Aft Mast
	285,225.5	5,758,121.2	-38°17'57.51" S	144°32'38.06" E	18.0	Stern Least depth
	285,223.4	5,758,128.7	-38°17'57.26" S	144°32'37.98" E	20.1	Stern

HMAS Canberra  
Roll - The wreck sits with a slight list to starboard at a 4.5 degree angle.  
Heading - The wreck is facing in an orientation of 210 degrees to true north.  
(based on soundings on the port & starboard side of deck at the rear of cabin.)  
Pitch - The wreck has little to no pitch in position, less than 0.5 of a degree.  
(based on soundings forward and Aft on the roof of the rear cabin.)



<p><b>Port of Melbourne Corporation</b> Level 4, 530 Collins Street, Melbourne, VIC 3000</p>	<p>CHIEF SURVEYOR: SURVEYED: A.Ternes 21/10/2009 DRAWN: A.Ternes 21/10/2009</p>	<p><b>PORT PHILLIP ENTRANCE</b> Ex -HMAS Canberra Dive Site Post Scuttling Survey (1 Week)</p>
<p>Scale: 1:200 (BEFORE REDUCTION) Scale of Metres</p>	<p>CHECKED: JOB TRACK FILE No. 2610 SHEET No. A0 SCALE: 1:2,500 PLAN No. 35514</p>	<p>AMENDMENT</p>