



## Quad Air Dive Computer

## • TABLE OF CONTENTS

<b>IMPORTANT WARNINGS</b>	<b>3</b>	3.2.1. ASCENT RATE	12
DISCLAIMER	3	3.2.2. MOD/PPO <sub>2</sub>	12
<b>1. INTRODUCTION</b>	<b>3</b>	3.2.3. CNS = 100%	12
1.1. GLOSSARY	3	3.2.4. MISSED DECOMPRESSION STOP	13
1.2. OPERATING MODES	4	3.2.4.1. MISSED DECO STOP MODE	13
1.3. USER-REPLACEABLE BATTERY	4	3.2.5. LOW TANK PRESSURE (IF OPTIONAL TANK MODULE IS USED)	13
1.4. CONNECTING QUAD AIR TO A PC OR MAC	4	3.2.6. LOW BATTERY	13
1.5. BUTTON OPERATION	4	3.3. DISPLAY INFORMATION	13
1.6. MOUNTING AND PAIRING OF THE TANK MODULE (OPTIONAL)	6	3.3.1. RUNAWAY DECO	14
<b>2. MENUS, SETTINGS AND FUNCTIONS</b>	<b>7</b>	3.4. AFTER THE DIVE	15
2.1. MODE	7	3.5. DIVING WITH MORE THAN ONE GAS MIXTURE	15
2.2. SET	8	3.5.1. SETTING MORE THAN ONE GAS	15
2.2.1. SET DIVE	8	3.5.2. SWITCHING GAS	16
2.2.1.1. LGHT (BACKLIGHT)	8	3.5.3. SPECIAL SITUATIONS	16
2.2.1.2. P FACT (P FACTOR)	8	3.5.3.1. SWITCHING BACK TO A GAS MIXTURE WITH LOWER OXYGEN CONCENTRATION	16
2.2.1.3. ALT (ALTITUDE)	9	3.5.3.2. SUBMERGING BELOW THE MOD AFTER A GAS SWITCH	16
2.2.1.4. WATR (WATER)	9	3.6. BOTTOM TIMER MODE (BT)	16
2.2.1.5. UNITS	9	3.6.1. DIVE VIOLATION INDUCED BOTTOM TIMER MODE	17
2.2.1.6. GAS INTEGR (GAS INTEGRATION)	9	<b>4. TAKING CARE OF QUAD AIR</b>	<b>17</b>
2.2.1.7. FAST (FAST ASCENT)	10	4.1. TECHNICAL INFORMATION	17
2.2.1.8. ALRM (ALARMS)	10	4.2. MAINTENANCE	17
2.2.1.9. ERASE (ERASE DESATURATION)	10	4.2.1. REPLACING THE BATTERY IN QUAD AIR	17
2.2.1.10. RUN AWAY DECO	10	4.3. WARRANTY	18
2.2.2. SET TIME	10	4.4. WARRANTY EXCLUSIONS	18
2.3. LOG (LOGBOOK)	10	4.5. HOW TO FIND THE PRODUCT SERIAL NUMBER	18
2.4. PLAN (DIVE PLANNER)	11	<b>5. DISPOSAL OF THE DEVICE</b>	<b>18</b>
2.5. PC	11		
2.6. INFO	11		
<b>3. DIVING WITH QUAD AIR</b>	<b>11</b>		
3.1. A FEW WORDS ABOUT NITROX	11		
3.2. ALARMS	12		

## • IMPORTANT WARNINGS

No part of this document may be reproduced, stored in a retrieval system, or transmitted in any form without the written permission of Mares S.p.A.

Mares adopts a policy of continuing improvement, and therefore reserves the right to make changes and enhancements to any of the products described in this manual without notice.

Under no circumstances shall Mares be held responsible for any loss or damage sustained by third parties deriving from the use of this instrument.

### WARNING

A dive computer is an electronic instrument and as such it is not immune to failure. To protect yourself against the unlikely event of a failure, in addition to the dive computer, also use a depth gauge, a submersible pressure gauge, a timer or watch, and dive tables.

### WARNING

Do not dive if the display appears unusual or unclear.

### WARNING

The dive computer must not be used in conditions that preclude its use (e.g.: low or no visibility, making it impossible to read the gauge).

### WARNING

The dive computer cannot ensure against possible decompression sickness.

## DISCLAIMER

This manual describes how to operate an instrument and it describes the information provided by the instrument during a dive.

Neither this manual nor the instrument are a substitute for dive training, common sense and good diving practices.

How the information provided by the instrument is interpreted and put to use by the diver is not the responsibility of Mares. Read the manual carefully and make sure you understand completely how the instrument works and the information it provides during a dive, including information on depth, time, decompression obligations and all warnings and alarms. Unless you fully understand how the instrument works and the information it displays and unless you accept full responsibility for using this instrument, do not dive with it.

## • 1. INTRODUCTION

### 1.1. GLOSSARY

<b>AIR:</b>	Air dive
	Symbolizes decompression stop violation.
	Symbolizes uncontrolled ascent and uncontrolled ascent violation
<b>ASC:</b>	Total ascent time, the time it takes to perform the ascent from your current depth to the surface in a decompression dive, including all decompression stops and assuming an ascent rate of 10m/min or 33ft/min.
<b>ASC + 5:</b>	The overall ascent time inclusive of all decompression stops if the dive is extended by 5 minutes at the current depth.
<b>AVG:</b>	Average depth, calculated from the beginning of the dive.
<b>CNS:</b>	Central Nervous System. CNS% is used to quantify toxic effects of oxygen.
<b>DESAT:</b>	Desaturation time. The time needed for the body to eliminate the nitrogen taken up during diving.
<b>Gas integration:</b>	The feature in Quad Air to include tank pressure information in its calculations and to display it on the computer screen.
<b>Gas switching:</b>	The act of changing from one breathing gas to another.
<b>Max depth:</b>	Maximum depth attained during the dive.
<b>MOD:</b>	Maximum Operating Depth. This is the depth at which the partial pressure of oxygen (ppO <sub>2</sub> ) reaches the maximum allowed level (ppO <sub>2</sub> max). Diving deeper than the MOD will expose the diver to unsafe ppO <sub>2</sub> levels.
<b>Multigas:</b>	Refers to a dive in which more than one breathing gas is used (air and/or Nitrox).
<b>Nitrox:</b>	A breathing mix made of oxygen and nitrogen, with the oxygen concentration being 22% or higher.
<b>NO FLY:</b>	Minimum amount of time the diver should wait before taking a plane.
<b>No deco time:</b>	This is the time that you can stay at the current depth and still make a direct ascent to the surface without having to perform mandatory decompression stops.
<b>O<sub>2</sub>:</b>	Oxygen.
<b>O<sub>2</sub>%:</b>	Oxygen concentration used by the computer in all calculations.
<b>P Factor:</b>	Personalization factors, which allow the user to select between the standard decompression algorithm (P0) and an increasingly more conservative one (P1, P2).
<b>Pairing:</b>	The act of establishing a coded RF communication between Quad Air and a tank module.
<b>ppO<sub>2</sub>:</b>	Partial pressure of oxygen. This is the pressure of the oxygen in the breathing mix. It is a function of depth and oxygen concentration. A ppO <sub>2</sub> higher than 1.6bar is considered dangerous.
<b>ppO<sub>2</sub>max:</b>	The maximum allowed value for ppO <sub>2</sub> . Together with the oxygen concentration it defines the MOD.
<b>Switch depth:</b>	The depth at which the diver plans to switch to a higher oxygen concentration mix while using the multigas option.
<b>S.I.:</b>	Surface interval.
<b>TTR:</b>	Time To Reserve, it is the time that a diver can spend at the current depth and current breathing rate before reaching the tank reserve.

## 1.2. OPERATING MODES

The functions of the Quad Air computer can be grouped into three categories, each corresponding to a specific mode of operation:

- surface mode: Quad Air is dry on the surface. You can change settings, review your logbook, use the dive planner, see remaining desaturation after a dive, download to PC and much more;
- dive mode: Quad Air monitors depth, time, tank pressure, temperature and performs all decompression calculations; dive mode itself can be broken down into 4 sub categories:
  - pre-dive (Quad Air is on the surface but actively monitoring ambient pressure, so that it can begin to calculate a dive the instant it is submerged below 1.2m/4ft);
  - dive
  - surfacing (Quad Air is on the surface at the end of a dive; dive time calculation is halted but if the diver submerges within three minutes the dive is resumed including the time spent on the surface);
  - post-dive (after the three minutes of surfacing mode, Quad Air closes the logbook and reverts to a display showing desaturation time, no-fly time and surface interval; this lasts until the desaturation and the no-fly time both have been reduced to zero).
- sleep mode: the computer is on the surface after 1 minute without operation (3 minutes from pre-dive mode). Though the computer appears to be turned off completely, it is still active. Quad Air computes tissue desaturation and checks the ambient pressure once every 20 seconds for uninterrupted monitoring of the environment.

## 1.3. USER-REPLACEABLE BATTERY

Quad Air uses a CR2450 user-replaceable battery. See section 4.2.1 for instructions on how to replace it. Good quality batteries should suffice for approx 100-150 dives, depending on the usage of the backlight and the temperature of the water. Diving in cold water, usage of the backlight and of the beeper increases battery consumption.

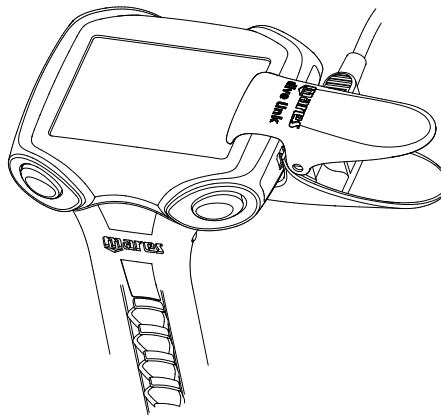
The display alerts you of the status of the battery. The three possible situations are described as follows:

- battery symbol not visible: the remaining battery charge is adequate for diving;
- steady battery symbol on the display: there is enough charge for a few more dives, but you should consider replacing the battery at the next opportunity;
- blinking battery symbol on the display (surface only): the battery is too weak for diving. Quad Air will not function as a dive computer and will not turn on if submerged.

The level of the battery charge can also be found on the "INFO" page (see section 2.6).

## 1.4. CONNECTING QUAD AIR TO A PC OR MAC

To connect Quad Air to a PC or Macintosh computer, use the optional clip and the USB cable and Dive Organizer to download your dives to a PC or Divers' Diary to download your dives to a Mac. Both software programs can be downloaded from [www.mares.com](http://www.mares.com).



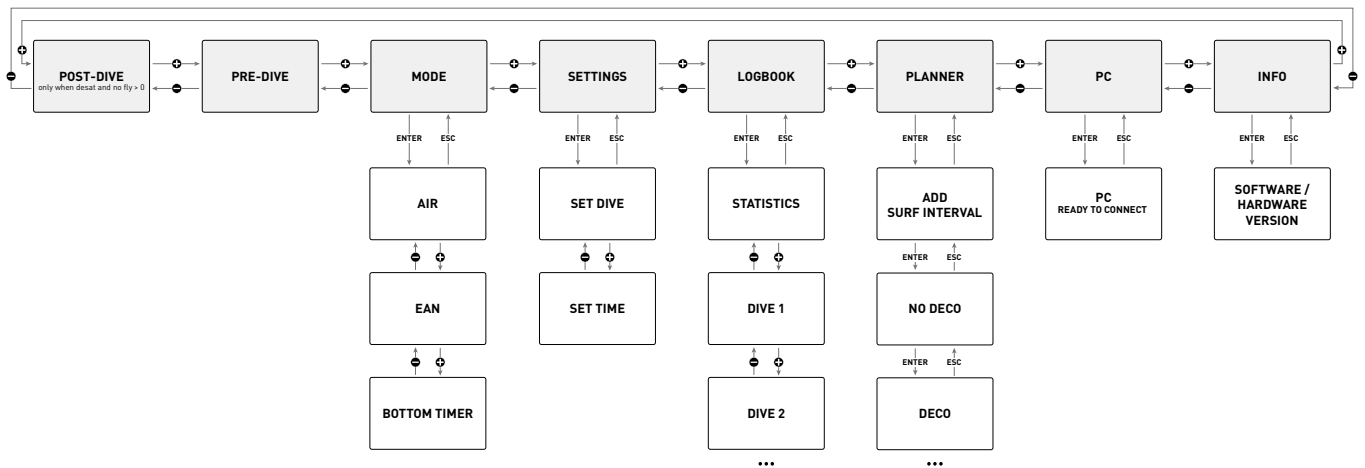
## 1.5. BUTTON OPERATION

Quad Air has 4 buttons, labelled **UP**, **DOWN**, **ESC** and **ENTER**. On the surface, **ENTER** allows you to enter a menu and confirm a setting, **ESC** exits a menu and goes up one level, **UP** and **DOWN** increase/decrease the value of a setting or move to the next item in a list.

During the dive, there is no distinction between left side and right side buttons, so that both upper buttons become the **UP** button and both lower buttons become the **DOWN** button. This is called Specular Button Arrangement and it simplifies the use of the computer. The **UP** button modifies the top row (depth information) whereas the **DOWN** button modifies the lower right corner of the display. Press and hold the **UP** button to activate the backlight.

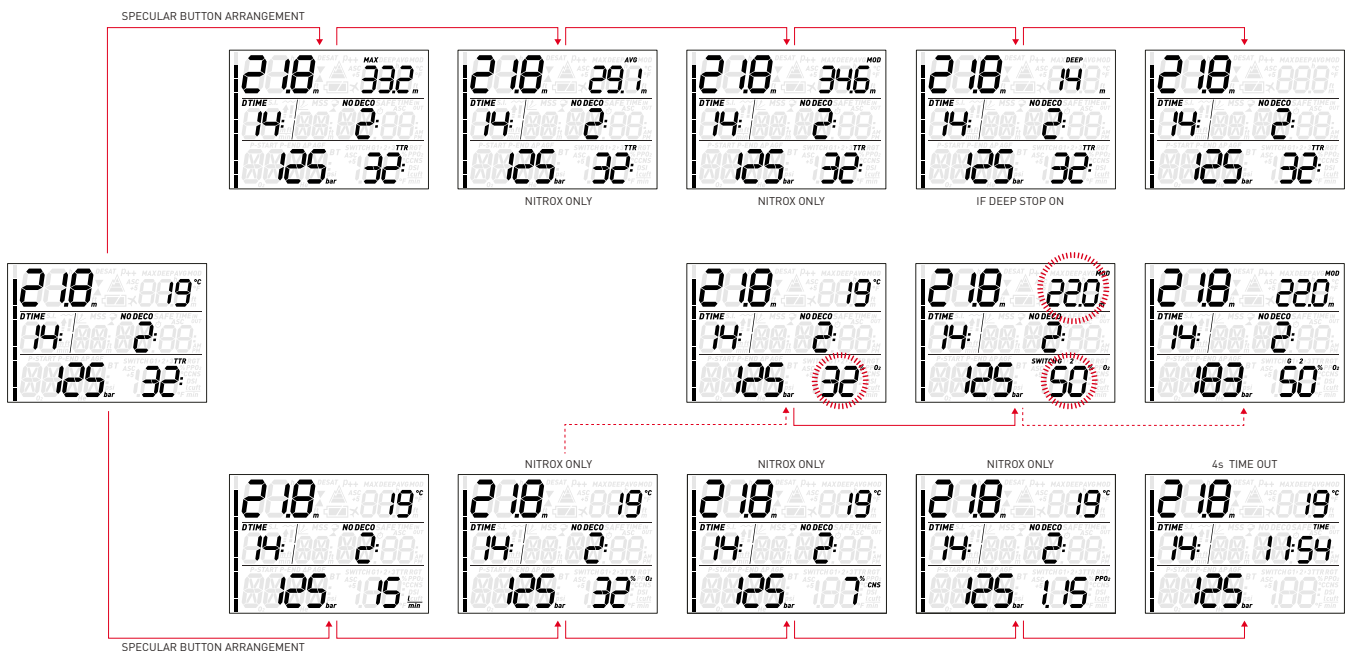
An overview of the button function both in surface mode and during a dive is presented in the next figures.

## SURFACE MODE



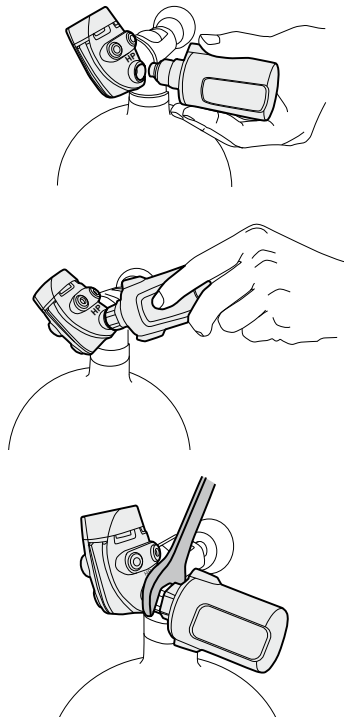
## DIVE MODE

- press
- press and hold



## 1.6. MOUNTING AND PAIRING OF THE TANK MODULE (OPTIONAL)

Quad Air can communicate with up to 3 tank modules regarding tank pressure and gas consumption information. Each tank module needs to be mounted on a high pressure port of a first stage regulator.



In order for Quad Air to display tank pressure and gas consumption information, you must first establish a channel of communication between the tank module and Quad Air. This is called **pairing**. This operation needs to be performed only once and ensures a permanent and interference-free link between the two devices.

### NOTE

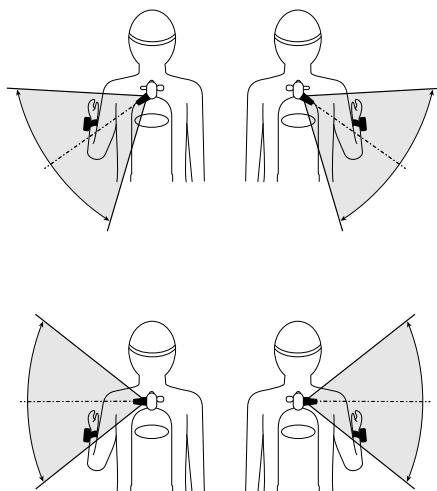
To perform the pairing operation, the tank module must be pressurized to at least 15bar/220psi. Hence it must be mounted on a first stage regulator, which is itself mounted on a full scuba tank and the valve opened.

To mount the tank module on the first stage regulator, first remove the high pressure port plug, then screw in the tank module gently by hand until you feel a minimum of resistance, then use a 19mm wrench to tighten it.

### NOTE

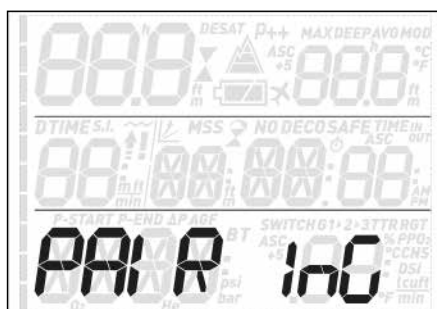
- Do not force the tank module while holding it by the plastic cap.
- Do not overtorque while using the wrench: the o-ring seal is assured as soon as you feel the first resistance. The only reason for using a wrench to tighten a bit more is to prevent the tank module from unscrewing itself over time.

The Mares tank module communicates via radio frequency with Quad Air. For best transmission, we recommend positioning the tank module as described in the next figures.



To pair the tank module with the Quad Air, proceed as follows:

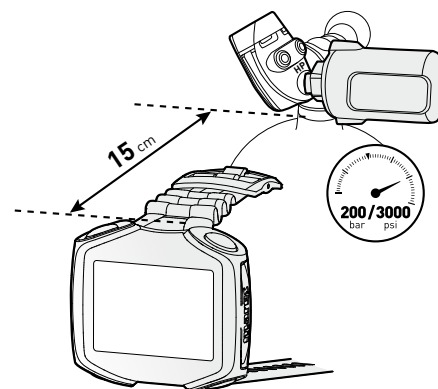
- Open the tank valve to pressurize the tank module. **You now have two minutes to perform all steps listed below;**
- Go into SET/SET DIVE/GAS INTEGR/PAIRING.



- The display will show **G1** in the lower right corner and the word **PAIR** in the middle. The top left corner shows the letters **nP** (Not Paired) or **P** (Paired) to indicate the current status of that channel. Use the **UP** and **DOWN** buttons in case you are trying to pair channel **G2** or **G3**.



- Place Quad Air at about 15 cm / 6 inches from the tank module as shown in figure 9.



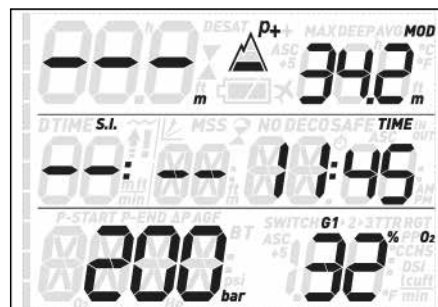
- Press **ENTER** and wait until either **OK** or **NOT OK** appear on the display. In the first case you have successfully established a connection, in the second you need to repeat the operation, **but you must turn off the valve and depressurize the first stage completely, then wait 5 minutes before attempting again.**



### NOTE

- When diving with more than one gas mixture, tanks **G1**, **G2** and **G3** must be set to increasing oxygen levels. Refer to section 3.5 for more information on multigas diving.
- A tank module can only be paired to one channel on one Quad Air. If you pair the same tank module to a second channel on the same Quad Air or to a second Quad Air, the first one will be erased.

After a successful pairing of **G1** to Quad Air, the pre-dive display will show the tank pressure in either **bar** or **psi** upon pressing and holding the lower left button. If tank **G1** has not been paired, Quad Air will show **nP** instead of a pressure value. If **G1** has been paired but Quad Air is not receiving any signal, it will show - - - instead of a pressure value.



**NOTE**

- The Mares tank module has a range of approximately 1.5m/5ft.
- The tank module remains on whenever it senses a pressure above 15bar/220psi. In order to maximize the life of the battery, after a dive close the tank valve and purge the second stage completely.
- If a tank module battery is weak, Quad Air alerts you by blinking the battery symbol together with **G1** (or **G2** or **G3**) in the upper right corner.

Refer to the dedicated tank module manual for information on how to replace the battery in the tank module.

**NOTE**

- You do NOT need to repeat the pairing procedure after a battery replacement in the tank module.
- You do NOT need to repeat the pairing procedure after a battery replacement in Quad Air.
- You do NOT need to repeat the pairing procedure after upgrading the firmware in your Quad Air.

**• 2. MENUS, SETTINGS AND FUNCTIONS**

This chapter describes in detail all menus, setting and functions of the Quad Air dive computer.

Quad Air always switches on in pre-dive mode. From here, pressing the **UP** or **DOWN** button allows you to scroll through the following sequence of menus:

- **MODE**: allows you to set the computer to air, nitrox or bottom timer mode;
- **SET**: allows you to view and change all settings relative to the dive computer;
- **LOG**: allows you to access the detailed history of the dives performed;
- **PLAN**: allows you to plan dives as a function of depth based on your current nitrogen load;
- **PC**: allows you to download dives to a PC or Mac
- **INFO**: allows you to view information about software and hardware of your Quad Air.

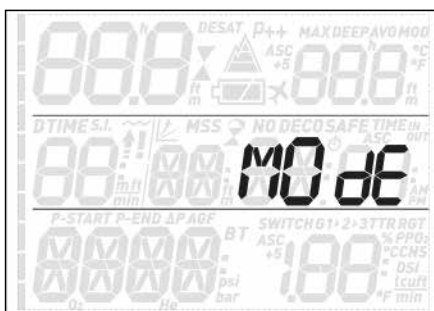
The **pre-dive** mode puts the computer in a ready-to-dive mode and ensures that Quad Air starts to monitor the dive as soon as a depth of 1.2m/4ft is reached. If you start the dive without putting Quad Air into **pre-dive** mode, it will start to monitor the dive automatically but with a delay of up to 20 seconds from immersion.

The pre-dive display shows p factor and altitude settings, time of day, surface interval since the last dive and tank pressure (when available **and upon having activated the communication by pressing and holding the lower left button**). If Nitrox is set, it will show the O<sub>2</sub> percentage and the corresponding MOD.

**NOTE**

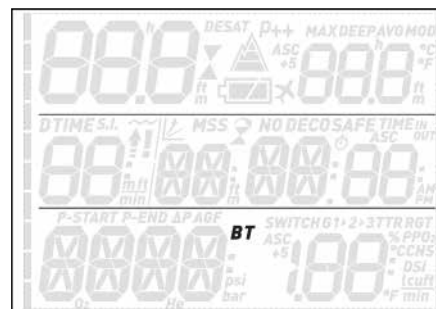
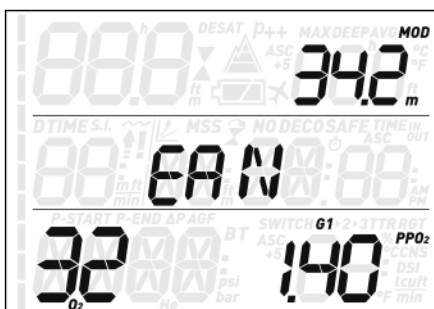
- In order to preserve battery life, the tank data is not automatically shown in pre-dive. You must press and hold the lower left button to activate the communication. Hence upon first entering into pre-dive, the bottom left corner will show **P 1s**, indicating that you must press the button for 1 second before you can see the tank pressure.
- If you remain in pre-dive for longer than 3 minutes without pressing any button, Quad Air will switch off.
- It is recommended to put Quad Air into pre-dive before submerging. Not doing so can lead to a delay of up to 20s in Quad Air monitoring the dive.

**2.1. MODE**



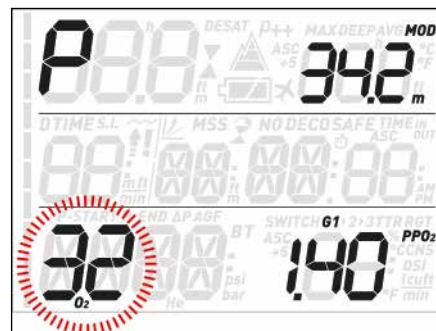
Here you can define the type of gas you will be breathing during the dive (air or enriched air nitrox, including multigas). You can also set Quad Air to bottom timer, in which case Quad Air will show only time, depth, tank pressure and temperature: it will not carry out any decompression calculation and it will not show any warnings and alarms.

Press the **UP** or **DOWN** button to scroll through the three possible options (**AIR**, **EAN** or **bottom timer**), then press the **ENTER** button to select it.



**AIR** is the equivalent of setting **EAN** to 21% and a ppO<sub>2</sub>max of 1.4bar, but simplifies the display a bit by not showing the CNS (its value however is calculated in the background and if needed the 75% warning and the 100% alarm are triggered).

When selecting **EAN**, you are taken to a submenu in which you can define the percentage of oxygen in the mixture (%O<sub>2</sub>) and the maximum value of oxygen partial pressure (ppO<sub>2</sub>max) for up to three breathing mixes. The maximum possible value for the ppO<sub>2</sub>max is 1.6bar. Most training agencies recommend not to exceed a value of 1.4bar. A "P" in the upper left corner indicates that a tank module has been paired to this channel (G1). Likewise, "nP" would indicate that no pairing to a tank module exists for this channel.



Once inside this menu, press the **UP** or **DOWN** button to change the O<sub>2</sub>% and observe how this affects the maximum operating depth (MOD). Then press the **ENTER** button to move on to the ppO<sub>2</sub>max and use the **UP** or **DOWN** button to change the value, again noticing how this affects the MOD. Press the **ENTER** button again to save the setting.



This leads you to the **G2 OFF** screen. Press **ESC** to exit the menu or go to section 3.5 to read about diving with more than one gas.



## WARNING

- Diving with Nitrox may only be attempted by experienced divers after proper training from an internationally recognized agency.
- Before every dive and after changing the tank, you must make sure that the set oxygen concentration in Quad Air corresponds to the oxygen concentration in the tank. Setting the wrong oxygen concentration can lead to serious injury or death.

## 2.2. SET



Quad Air's **SEt** menu allows you to change settings. Once inside this menu, press the **UP** or **DOWN** button to scroll between two submenus: **SEt dIVE**, where you can set parameters pertaining to the dive, and **SEt tIME**, where you can set parameters pertaining to time and date.

Press the **ENTER** button to enter a menu, press the **UP** or **DOWN** button to scroll up and down between available options or to increase or decrease the value of a setting. Then press the **ENTER** button to confirm the change in setting. Press the **ESC** button to go up one level in the menu tree.

MENU	Description
<b>SEt dIVE</b>	
- <b>LGHT</b>	Allows you to set the duration after which the backlight turns off automatically. You can set this between 1 and 10 seconds.
- <b>P FACt</b>	Allows you to choose between the standard algorithm ( <b>P0</b> ) and an increasingly more conservative one ( <b>P1</b> , <b>P2</b> ).
- <b>ALt</b>	Allows you to set the algorithm into altitude mode when diving in mountain lakes.
- <b>WAtR</b>	Allows you to choose between salt (1.025kg/l) and fresh (1.000kg/l) water or <b>EN13</b> (1.0197kg/l), corresponding to the water density used in European Norm 13319.
- <b>UNItS</b>	Allows you to choose between metric ( <b>m</b> , <b>°C</b> , <b>bar</b> ) and imperial ( <b>ft</b> , <b>°F</b> , <b>psi</b> ) units.
- <b>GAS INT EGR</b>	Allows you to pair your Quad Air with optional tank modules and to define all parameters concerning gas integration (tank volume, half tank pressure and tank reserve).
- <b>FAST</b>	Allows you to turn off the dive violation due to uncontrolled ascent. This is for dive instructors only, who may find themselves in such a situation because of their teaching requirements.
- <b>DEEP</b>	Allows you to activate or deactivate the visualization of deep stops.
- <b>TEMP</b>	Allows you to define whether the temperature is displayed in the top right or bottom right corner of the display.
- <b>ASC 5</b>	Allows you to define whether the projected ascent time is displayed in the top right or bottom right corner of the display.
- <b>ALRM</b>	Allows you to turn on or off all audible alarms of Quad Air.
- <b>ErASE</b>	Allows you to reset the nitrogen saturation to zero, thereby erasing the effects of a previous dive. This is only for people who plan to lend their computer to another diver who has not performed a dive within the last 24 hours.
- <b>run AWAY dECO</b>	Allows you to set the runaway deco alarm. Please refer to section 3.3.1 for more details on this.
<b>SEt tIME</b>	Allows you to set the time.

## 2.2.1. SEt dIVE



### 2.2.1.1. LGHT (BACKLIGHT)



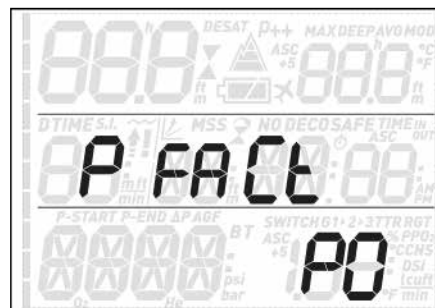
Quad Air has a backlight which can be activated in case of low ambient light. The backlight is activated by pressing and holding either of the upper buttons. During a dive, the backlight will stay on for the duration defined in this menu. You can choose between 1 and 10 seconds.

#### NOTE

- The backlight consumes battery energy: the longer the backlight stays on, the less your battery will last.
- If the **low battery** warning is activated, the backlight will be disabled.

In surface mode, the backlight can be activated by pressing and holding either of the upper buttons. The backlight will stay on for 6 seconds, unless you go into any menu, in which case it will stay on until you return to the pre-dive display or after one minute of no button operation (at which point Quad Air turns off).

### 2.2.1.2. P FACt (P FACTOR)



Quad Air allows you to set an additional personal safety factor for those circumstances in which you want to be especially cautious, such as after a long period of inactivity or when planning a strenuous dive. In this menu you can choose between the standard algorithm (**P0**), a more conservative version (**P2**) or an intermediate one (**P1**). On the pre-dive, post-dive, logbook and planner displays,

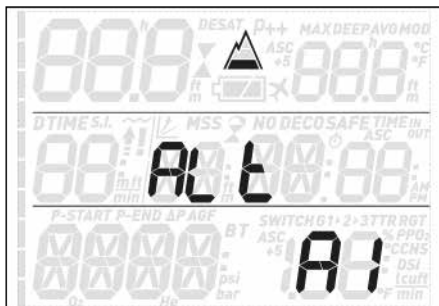


P1 is displayed with p+, P2 with p++ and P0 is indicated by the absence of symbols.

**NOTE**

The choice of **p factor** will be reflected in the dive planner.

2.2.1.3. ALt (ALTITUDE)



Atmospheric pressure is a function of altitude and of weather conditions. This is an important aspect to consider for diving, because the atmospheric pressure surrounding you has an influence on uptake and subsequent release of nitrogen. Above a certain altitude, the decompression algorithm has to change in order to account for the effect of the change in atmospheric pressure. When diving in a mountain lake, find out what the altitude is and choose the altitude range in Quad Air within the four available options:

- **A0**: from sea level to approximately 700m/2300ft;
- **A1**: from approximately 700m/2300ft to approximately 1500m/4900ft ;
- **A2**: from approximately 1500m/4900ft to approximately 2400m/7900ft;
- **A3**: from approximately 2400m/7900ft to approximately 3700m/12100ft;
- We do not recommend diving at altitudes above 3700m / 12100ft. If you do, set Quad Air to **bottom timer** and find appropriate altitude dive tables.

On the pre-dive, post-dive, logbook and planner displays, A1 through A3 are indicated with the mountain symbol filled with 1, 2 or 3 segments while A0 is indicated by the absence of symbols.

**WARNING**

Diving in mountain lakes without first setting Quad Air to the proper altitude setting can cause severe injury or death.

2.2.1.4. WAtR (WATER)



You can set the computer for **FRSH** water, **SALT** water or **EN13** calibration, depending on where you intend to dive. Setting the wrong water

type entails an error in depth measurement of 1-3% (e.g. at a depth of 30m/100ft, a computer set to salt water will show 29m/97ft in fresh water whereas a computer set to fresh water will show 31m/103ft in salt water). Note that this does not affect the proper functioning of the computer, since the computer performs all of the calculations based purely on pressure measurements.

2.2.1.5. UNItS



You can choose between metric (depth in meters, temperature in °C, tank pressure in bar) and imperial units. (depth in feet, temperature in °F, tank pressure in psi).

2.2.1.6. GAS INTEGR (GAS INTEGRATION)

This menu contains six submenus. The first one allows you to pair the tank modules to Quad Air. Please refer to section 1.6 for the description of the pairing process.

The second menu, **tANK VOLM**, allows you to set the size of the volume of the tank, individually for **G1**, **G2** and **G3**. This parameter is important for a correct evaluation of your gas consumption in l/min or cu ft /min. Default setting is **12l** for metric system and **80 cubic feet** in imperial. For the imperial setting it is paramount that you also set the correct operating tank pressure, since the size of the tank is referenced to this pressure.



The third menu, **OP. tANK PRSS** is where you define the nominal fill pressure of your tanks. This can be set individually for each tank (**G1**, **G2** or **G3**). When the units are set to ft/°F/psi, this value is important because together with the tank volume it allows Quad Air to correctly evaluate your gas consumption in cu ft/min. Default values are **200bar** and **3000psi**.



The fourth menu, **tANK WARN**, is the value at which Quad Air triggers a half tank warning. This can be set individually for each tank (**G1**, **G2** or **G3**). Default values are **100bar** and **1500 psi**.



The fifth menu, **tANK RSRV**, is the value at which an alarm is triggered because you should always be at the surface before reaching this level. Furthermore, this value is used to calculate the **TTR** value (see section 3.2.5 and 3.3). This can be set individually for each tank (**G1**, **G2** or **G3**). Default values are **50bar** and **750psi**.



The sixth and last menu is called **AUtOZEro RSt** and it allows you to set the ambient pressure reading on the tank module in the unlikely event of a drift of the zero value. You would perform this operation if you noticed a significant difference between the read-out of Quad Air and a calibrated pressure gauge also connected to the same first stage.



Due to the potential of introducing an error in the tank module measurement, please contact

your Mares Authorized Service Center before performing this operation.

## 2.2.1.7. FAST (FAST ASCENT)



A fast (uncontrolled) ascent is defined as one in which a speed of 12 m/min / 40ft/min or higher was maintained over more than two thirds of the way up. This applies to dives deeper than 12m/40ft only. In such an event, due to the potential of harmful bubble formation, Quad Air locks the computer for 24 hours in order to discourage you from diving again. In this menu, you have the option to disable the locking up of the computer in the event of an uncontrolled ascent.

### ⚠ WARNING

- An uncontrolled ascent increases your risk of decompression sickness (DCS)
- This feature is intended for very experienced divers only, such as dive instructors, who take full responsibility for the consequences of turning off this function.

## 2.2.1.8. ALRM (ALARMS)



In this menu you can disable audible alarms.

### ⚠ WARNING

Disabling audible alarms can lead you into potentially dangerous situation and could result in serious injury or death.

## 2.2.1.9. ErASE (ERASE DESATURATION)



Quad Air allows you to reset the desaturation in the computer. Any tissue saturation information from a recent dive will be reset to zero and the computer treats the next dive as a non-repetitive dive. This is useful when the computer is loaned to another diver who has not dived in the last 24 hours.

### ⚠ WARNING

Diving after having reset the desaturation is extremely dangerous and is very likely to cause serious injury or death. Do not reset the desaturation unless you have a valid reason to do so.

In order to prevent accidental desaturation reset, you must enter the security code once you decide to proceed with the reset. The security code is 1234.

After entering the security code you will get a confirmation of the successful completion of the operation.

## 2.2.1.10. run AWAY deCO

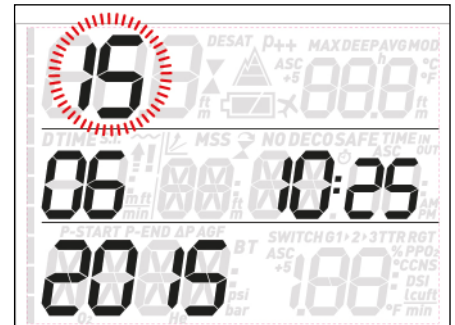


In this menu you can define the runaway deco alarm. The possible settings are **OFF**, **10**, **15** and **20**. Refer to section 3.3.1 for more information.

## 2.2.2. SET TIME



This menu allows you to set the time and date. Press the **ENTER** button and **24h** or **ampm** will start to blink. Press the **UP** or **DOWN** button to switch between the two and/or press the **ENTER** button to confirm and move on to set the hour, the minutes and the date.

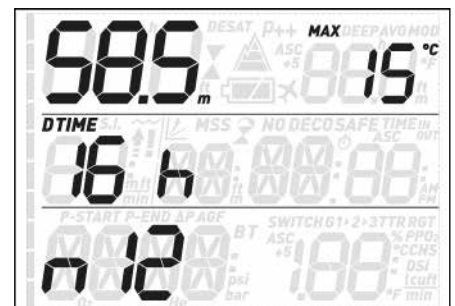


## 2.3. LOG (LOGBOOK)



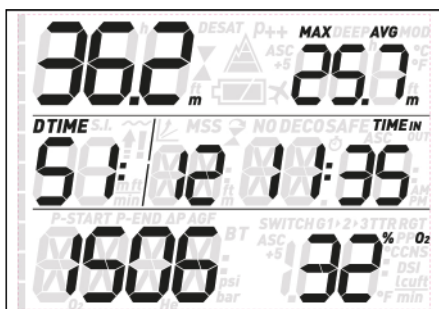
Quad Air can record the profiles of approximately 35 hours of diving, at a sampling rate of 5 seconds. The information can be transferred using the optional USB clip to PC via the Dive Organizer software or to a Mac via the Divers' Diary software. In addition, Quad Air can show most of the information directly on the display.

When you first enter the logbook menu, you will see a summary of all dives performed to date. In particular, the maximum depth ever reached, the total number of dives, the total number of hours spent underwater and the coldest water temperature recorded.

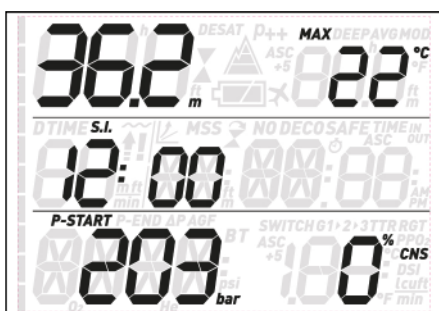


From here, press the **UP** or **DOWN** button to scroll through all dives in the memory of the computer. Each dive has two or more pages of data. Page 1 has maximum depth of the dive in the upper left corner while minimum

temperature and average depth alternate every 2s in the upper right corner. The dive time is displayed in its usual location, next to it there is a sequential dive counter (1 being the most recent dive) followed by alternating time in and time out information. In the bottom left corner is the date of the dive and next to it the oxygen concentration of G1.



Press **ENTER** to view the next page of the dive log, which shows the surface interval prior to the dive instead of the dive time, the tank pressure (alternating starting, ending and differential value every 2s) and **CNS** (alternating between start and end value) in the bottom row. In case more than one gas was used in the dive, there is an additional page for **G2** and **G3**, if applicable.



Press the **UP** or **DOWN** button to scroll between the pages of information, press the **ESC** button to return to the list of the main logbook menu.

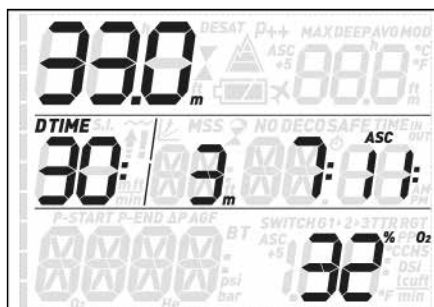
## 2.4. PLAN (DIVE PLANNER)



This function allows you to plan your next dive. Upon entering this menu, the display lists the settings used for the calculation: P Factor and Altitude selections. The middle row shows a surface interval of 0:00: in case you dived recently, you can enter an additional surface interval between now and when you intend to dive by pushing the **UP** button; the residual nitrogen load will be adapted accordingly. Next press the **ENTER** button to enter the actual dive plan: Quad Air displays a depth and the corresponding no deco time.

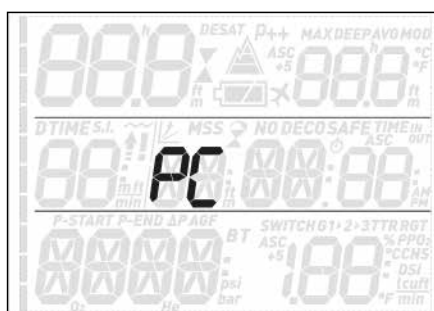


In the bottom row it lists the oxygen concentration of G1. Use the **UP** and **DOWN** buttons to increase/decrease the depth in 3m / 10ft increments (limited to the MOD of G1) and view the related no deco time. Press the **ENTER** button to enter deco planning: Quad Air will add one minute to the no deco time and show the corresponding deco obligation. Now use the **UP** and **DOWN** buttons to modify the dive time and view how this affects the deco calculation. Press the **ESC** button to return to the no deco dive planner. From here either choose a different depth and repeat a deco plan or press the **ESC** button to exit the dive planner.



**NOTE**  
The dive planner is enabled only if either air or nitrox mode is set

## 2.5. PC



This submenu allows you to download your dive data to a PC or Mac. Press the **ENTER** button and the display will show **PC ready**, symbolizing that Quad Air is ready to communicate.



## 2.6. INFO



This submenu provides information about the hardware and software of your Quad Air and about the status of the battery: **OK** means the battery is good, **LOW** means the battery is weak but you can still do a few more dives, and **KO** means the battery is very low and Quad Air won't function as a dive computer.



## 3. DIVING WITH QUAD AIR

### 3.1. A FEW WORDS ABOUT NITROX

Nitrox is the term used to describe breathing gases made of oxygen-nitrogen mixes with an oxygen percentage higher than 21% (air). Because Nitrox contains less nitrogen than air, there is less nitrogen loading on the diver's body at the same depth as compared to breathing air.

However, the increase in oxygen concentration in Nitrox implies an increase in oxygen partial pressure in the breathing mix at the same depth. At higher than atmospheric partial pressures, oxygen can have toxic effects on the human body. These can be lumped into two categories:

- Sudden effects due to oxygen partial pressure over 1.4bar. These are not related to the length of the exposure to high partial pressure oxygen, and can vary in terms of the exact level of partial pressure they

# Quad Air Dive Computer

happen at. It is commonly accepted that partial pressures up to 1.4bar are tolerable, and several training agencies advocate maximum oxygen partial pressures up to 1.6bar.

- Long exposure effects to oxygen partial pressures over 0.5bar due to repeated and/or long dives. These can affect the central nervous system, cause damage to lungs or to other vital organs.

Quad Air keeps you safe with respect to these two effects in the following ways (as long as it is set to either **air** or **nitrox**):

- Against sudden effects: Quad Air has an MOD alarm set for a user-defined  $ppO_2$ max. As you enter the oxygen concentration for the dive, Quad Air shows you the corresponding MOD for the defined  $ppO_2$ max. The default value of  $ppO_2$ max from the factory is 1.4bar. This can be adjusted to your preference between 1.2 and 1.6bar. Please refer to section 2.1 for more information on how to change this setting. If Quad Air is set to air, the  $ppO_2$ max is set to 1.4bar by default.
- Against long exposure effects: Quad Air "tracks" the exposure by means of the CNS% (Central Nervous System). At levels of 100% and higher there is risk of long exposure effects, and consequently Quad Air will activate an alarm when this level of CNS% is reached. Quad Air also warns you when the CNS level reaches 75%. Note that the  $ppO_2$  is independent of the value of  $ppO_2$ max set by the user.

## 3.2. ALARMS

Quad Air can alert you of potentially dangerous situations. There are six different alarms:

- Ascent rate alarm;
- Exceeding a safe  $ppO_2$ /MOD;
- CNS =100%;
- Missed decompression stop;
- Low tank pressure;
- Low battery during the dive

### ⚠ WARNING

When in bottom timer mode, all warnings and all alarms are OFF aside for the low battery alarm and tank reserve alarm.

### NOTE

- Alarms are both visual and audible, as described in detail below.
- Ascent rate alarm has priority over other alarms if they are triggered simultaneously.

### 3.2.1. ASCENT RATE

As soon as depth decreases by more than 80cm / 3ft Quad Air activates the ascent rate control algorithm and displays the calculated value. This is shown in lieu of the dive time.

### ⚠ WARNING

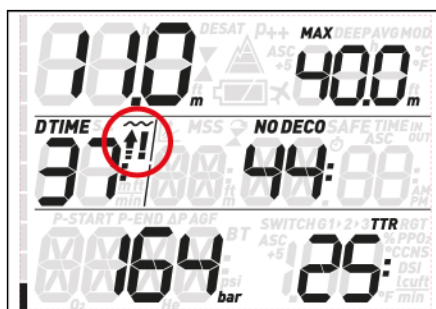
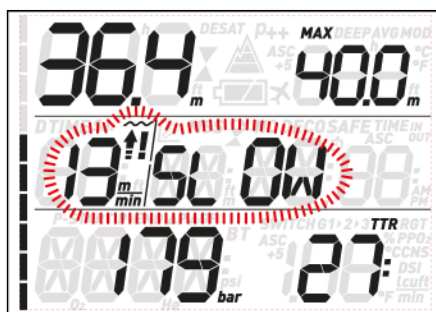
A rapid ascent increases the risk of decompression sickness.

If Quad Air determines an ascent rate of 10m/min / 30ft/min or higher, the fast ascent alarm is triggered: an audible alarm goes off and **SLOW** appears blinking on the display. This

persists until the ascent rate is reduced to 10m/min / 30ft/min or less.



If the ascent rate exceeds 12m/min / 40ft/min at a depth below 12m / 40ft, **!!** blinks as well. If a speed in excess of 12m/min / 40ft/min is maintained for two thirds or more of the depth at which the alarm was first triggered, Quad Air considers it a dive violation and the display will show the steady **!!**.



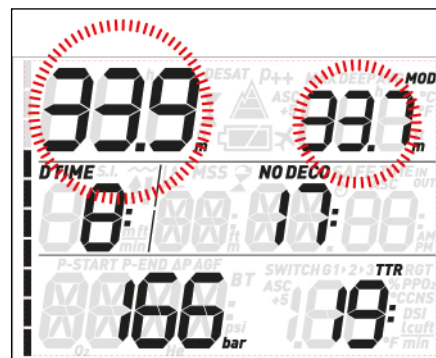
In this case, if the diver attempts a repetitive dive after surfacing, Quad Air will only function as a depth gauge and timer (bottom timer mode), and will display **!!** on the screen throughout the dive.

### 3.2.2. MOD/ $ppO_2$

#### ⚠ WARNING

- The MOD should not be exceeded. Disregarding the alarm can lead to serious injury or death.
- Exceeding a  $ppO_2$  of 1.6bar can lead to sudden convulsions resulting in serious injury or death.

When the diver reaches a depth at which the  $ppO_2$  of the inspired gas exceeds the maximum limit entered in the corresponding setting (from 1.2 to 1.6bar), an audible alarm goes off, the current depth starts to blink and the value of the MOD is shown to the right of the current depth, also blinking.



The alarm persists until the diver has ascended enough for the  $ppO_2$  to return within the set limit.

#### ⚠ WARNING

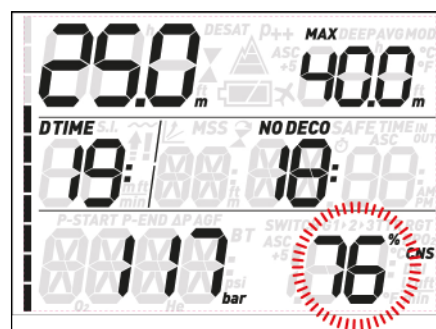
When the MOD alarm is triggered, ascend immediately until the alarm stops. Failure to do so could result in serious injury or death.

### 3.2.3. CNS = 100%

#### ⚠ WARNING

When the CNS reaches 100% there is danger of oxygen toxicity. Start procedure to terminate the dive.

Oxygen toxicity exposure is tracked on Quad Air by means of the CNS% based on currently accepted recommendations for exposure limits. This toxicity is expressed as a percentage value which ranges from 0% to 100%. When the value reaches 75%, an alarm goes off and the CNS value blinks on the screen. Additionally the CNS becomes the default item in the lower right corner: if you call up other information after 8 seconds the CNS appears again. Ascend to shallower depth to decrease oxygen loading and consider terminating the dive.



When the oxygen toxicity level reaches 100% the alarm is repeated for 5 seconds in one-minute intervals after the first occurrence and for as long as the value of CNS stays at or above 100%. Consider terminating the dive immediately!

#### ⚠ WARNING

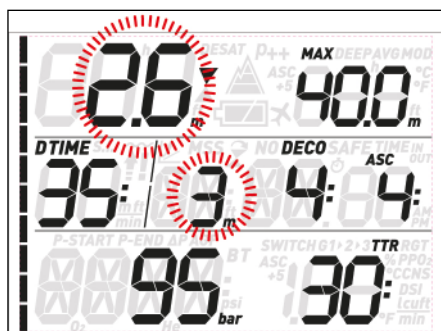
Diving with oxygen toxicity at levels of 75% or greater may put you into a potentially hazardous situation, which could result in serious injury or death.

### 3.2.4. MISSED DECOMPRESSION STOP

#### ⚠ WARNING

Violating a mandatory decompression obligation may result in serious injury or death.

If you ascend above the decompression stop depth by more than 0.3m (1ft), a downward pointing triangle appears, an audible alarm goes off and both the current depth and the depth of the deco stop start blinking. This alarm remains active until you return to the correct depth.

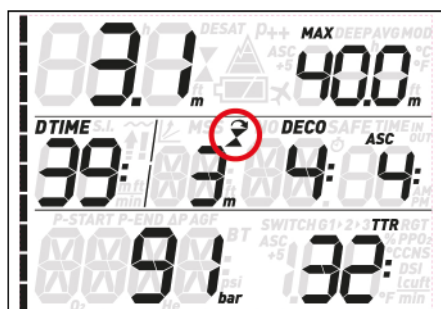


#### ⚠ WARNING

- When the missed deco stop alarm is triggered, desaturation of the simulated tissue compartments is halted and resumes only when the diver returns to the correct stop depth.
- Never ascend above the displayed decompression stop depth.

#### 3.2.4.1. MISSED DECO STOP MODE

If the stop depth is exceeded by more than 1m (3ft) for more than three minutes, Quad Air considers it a dive violation and the display will show ⚠.



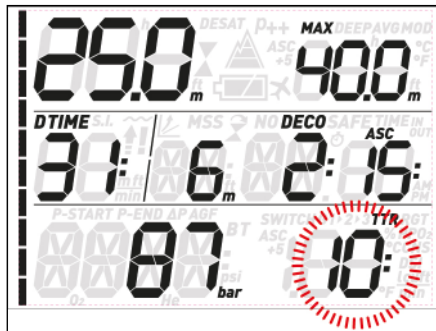
In this case, if the diver attempts a repetitive dive after surfacing, Quad Air will function only as a depth gauge and timer (bottom timer mode), and it will display ⚠ on the screen.

#### 3.2.5. LOW TANK PRESSURE (IF OPTIONAL TANK MODULE IS USED)

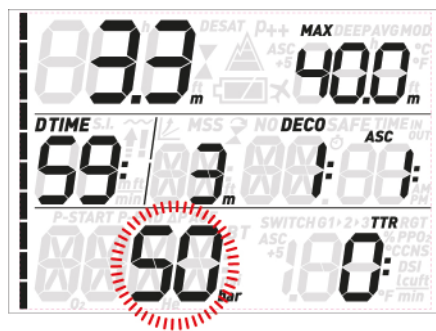
When Quad Air is used in conjunction with a tank module, you will not only have tank pressure information clearly visible on the display, but also an estimate of the time you can still spend at the depth you are at, based on the current gas consumption, before reaching the tank reserve. This is called **TTR** – Time To Reserve.

When during a decompression dive Quad Air calculates a **TTR** which is inferior to the total

ascent time, the **TTR** value starts to blink and an audible alarm goes off. Press any button to acknowledge the alarm and it will turn off. We strongly suggest initiating an ascent when this situation arises, in order to avoid running out of breathing gas during the decompression stop.



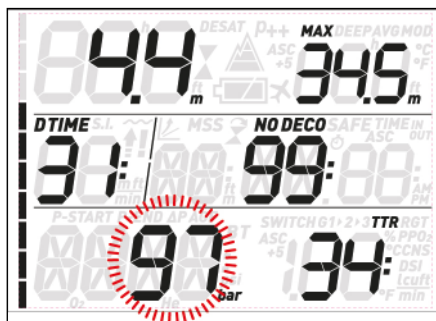
Additionally, when the tank pressure reaches the value specified under **tANK RSRV**, the tank pressure starts to blink and an audible alarm goes off. Press any button to acknowledge the alarm and silence it, though the tank pressure will continue to blink.



#### NOTE

For metric setting only: if the tank reserve is set to a value below 50bar, the alarm will go off at 50bar and the value defined as tank reserve will be used for **TTR** calculation only.

Quad Air features also a half tank alarm, which goes off when the pressure defined in the **tANK WARN** menu is reached. The pressure will blink and an audible alarm goes off: press any button to acknowledge the alarm and to turn it off.

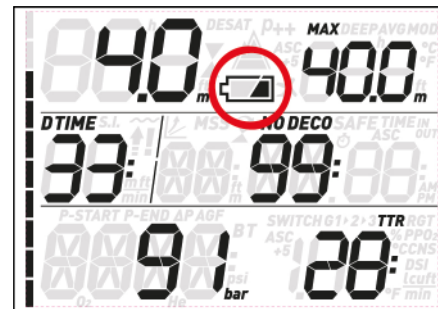


#### NOTE

If you set the **tANK WARN** value to the same value as **tANK RSRV**, you will eliminate the half tank alarm.

### 3.2.6. LOW BATTERY

If Quad Air detects that the battery power level is safe for diving but without much reserve left, it will show the steady battery symbol on the display.

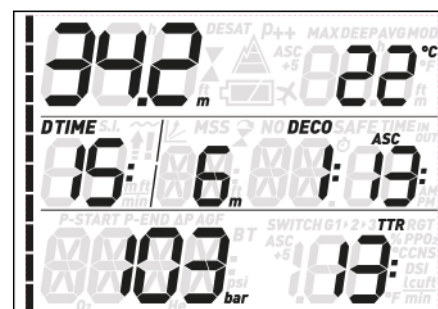


### 3.3. DISPLAY INFORMATION

Upon immersion, if Quad Air was set to pre-dive, it will immediately start monitoring the dive. Otherwise, it will turn on automatically within 20 seconds of having reached a depth of 1.2m/4ft.

The following information is shown:

- current depth
- temperature
- no deco time (or depth and duration of deepest stop and total ascent time in case of decompression dives)
- dive time
- tank pressure
- TTR
- nitrogen saturation bar graph



By pressing either of the upper buttons, you can modify the information displayed in the upper row. At each button press, the screen cycles through temperature, max depth, average depth, MOD (nitrox only), deep stop (if activated and if calculated to be present), and an empty field.

By pressing either of the lower buttons, you can modify the information displayed in the bottom row. At each button press, the screen cycles through time to reserve, gas

consumption, oxygen percentage, CNS,  $ppO_2$ , ASC+5 (projected ascent time, see section 3.3.1) and time of day (in lieu of decompression information; the latter has a 4-second time out after which the decompression information is displayed again).

### NOTE

The position on the display of the temperature and the projected ascent time can be customized in the SET DIVE menu.

In case of an ascent, the **speed** in m/min or ft/min is displayed in lieu of the dive time.

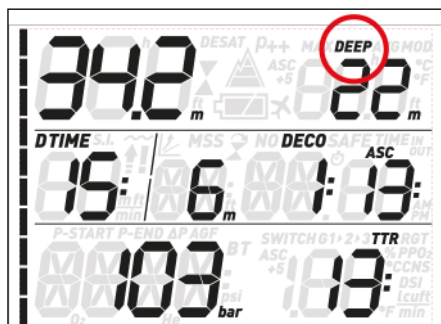
The **depth** is given in 10cm resolution until 99.9 meters, after which it is given in 1m resolution. When the depth is displayed in feet, the resolution is always 1 foot. At a depth shallower than 1.2m/4ft, the display shows ---. Maximum possible depth is 150m/492ft.

The **dive time** is displayed in minutes. If during the dive you ascend to the surface, the time spent on the surface will only be counted if you descend again below 1.2m/4ft within 3 minutes. This allows for brief periods of orientation. While on the surface, the time will not show as progressing but it is running in the background. As soon as you submerge, the time will resume, including the time spent on the surface.

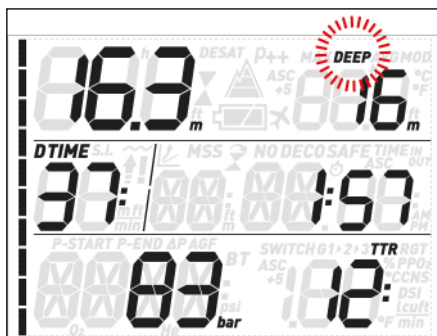
The **no deco time** is calculated in real time and updated continuously. Maximum displayed no deco time is 99 minutes. If you remain at depth beyond a no deco time of zero minutes, you will enter into decompression: you can no longer make a direct ascent to the surface and Quad Air displays a **MANDATORY** decompression stop. Instead of a no deco time, it shows you the depth and duration of the deepest stop and the total ascent time (**ASC**), which includes each decompression stop and the time required to travel the vertical distance to the surface at a rate of 10m/min / 33ft/min. **ASC** does not include the duration of deep stops.

### DEEP, DECO and SAFETY stops:

- **DEEP** stops are generated as you approach the no deco limit. You can either have one 2-minute stop or two 1-minute stops. **DEEP** stops are **NOT** mandatory. Deep stops are displayed to the right of the current depth.

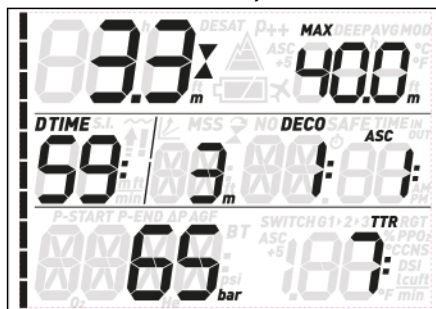


Upon reaching the optimum range for carrying out a deep stop (+/- 1m /3ft of the displayed depth), the deep stop itself will be shown in the top right corner with the label **DEEP** blinking, and a countdown timer appears to indicate the progress of the stop.



Deep stops can be deactivated in a dedicated settings menu.

- **DECO** stops are generated progressively as you stay down beyond the no deco time. **DECO** stops are **MANDATORY**. For **DECO** stops, since the duration is a function of the exact depth, only the minutes are shown. During a decompression stop, the following symbols may appear:
  - ▼ : optimal range for the decompression stop;
  - ▲ : above decompression stop depth, descend immediately!



- A **SAFETY** stop is generated as soon as the depth of the dive exceeds 10m / 33ft. It has a duration of 3 minutes and it is carried out between depths of 6m / 20ft and 3m / 10ft at the end of a dive prior to surfacing. Such stop is **NOT** mandatory but **HIGHLY RECOMMENDED**.



### WARNING

During all dives, perform a safety stop between 3 and 6 meters/10 and 20 feet for 3 minutes, even if no decompression stop is required.

The **tank pressure** is based on the signal from the tank module. The tank module has a range of 1.5m/5ft.

### WARNING

- If Quad Air receives no signal from the tank module for 45 seconds, the pressure value is replaced by ---. Check the position of Quad Air with respect to the tank module. Start ascending if you don't get a tank pressure reading unless you have a spare pressure gauge.
- If the tank pressure reaches 15bar/220psi, the tank module will turn off and Quad Air will not show tank pressure any longer.

The **TTR** (time to reserve) is the time you can spend at the current depth breathing at the current rate before reaching the user defined tank reserve.

### NOTE

Quad Air needs approximately 2 minutes to analyze your breathing pattern, thus the TTR is not displayed at the very beginning of the dive.

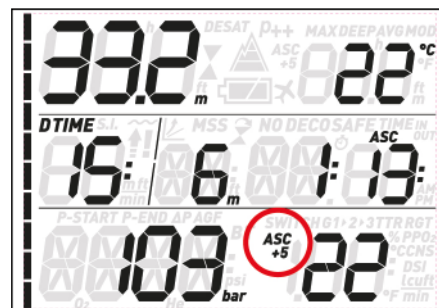
The **nitrogen bar graph** is on the left side of the display. It represents nitrogen saturation in the leading tissue compartment. The bar graph is made of ten segments, which gradually fill during the dive. The more black segments you see, the closer to the no deco limits you are. As you enter a situation of mandatory decompression stop, all segments will be black.

During a surface interval, the segments will gradually turn off as Quad Air tracks the offgassing of your tissues.

**Ascent rate:** in presence of a depth change in excess of 80cm / 3ft, Quad Air calculates the corresponding ascent speed and displays in place of the dive time, for the duration of the ascent.

### 3.3.1. RUNAWAY DECO

In case of a decompression dive, the **DOWN** (or **UP**, if changed by the user) sequence also features **ASC+5**. The value shown represents the total ascent time if you were to remain at the current depth for an additional 5 minutes. This is very useful since it allows you to estimate how your decompression will be affected by remaining at the current depth a while longer.



It is also very useful because, as the slower tissues start accumulating nitrogen, you could find yourself in a situation in which the decompression time grows very quickly, so much so that you may find yourself with insufficient gas to finish the dive.

**NOTE**

Associated to a large difference between the current **ASC** and the **ASC+5** value, Quad Air will alert you with the **RUNAWAY DECO** warning: since the **ASC+5** calculation runs in the background and is continuously updated, Quad Air monitors this value and, if it is calculated to be greater than 10 minutes beyond the current **ASC**, Quad Air will trigger the alarm with the **ASC+5** value blinking and **RUNAWAY** blinking in the middle row. Press any button to acknowledge the alarm and turn it off.

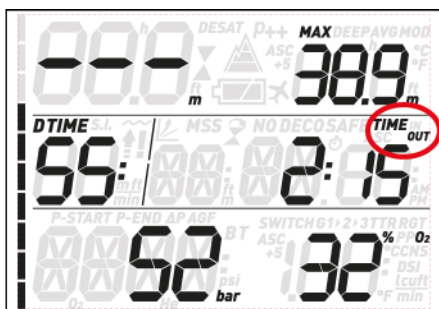


**NOTE**

The trigger point of the **RUNAWAY DECO** alarm can be set to **10, 15, 20** or it can be turned **OFF**. As an example, if you set **RUNAWAY DECO** to **15**, the alarm will be triggered when the difference between the current **ASC** and the predicted one 5 minutes later is **15** minutes or greater.

**3.4. AFTER THE DIVE**

Upon returning to the surface, Quad Air first goes into the so-called surfacing mode. This mode allows you to resume your dive after a brief period of orientation. The screen shows a 3-minute countdown.

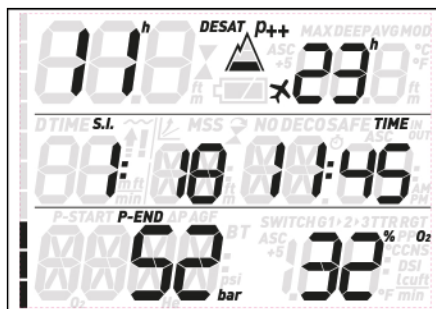


If you submerge again before the 3-minute countdown is over, the dive time will resume from where it left off, including the time spent on the surface. If you do not submerge before the end of the countdown, Quad Air considers the dive finished, records the data to the logbook and reverts to the so-called post-dive mode.

The post-dive screen shows two sets of information, alternating in 4s intervals. One contains:

- The remaining desaturation time (**DESAT**): this is calculated by the decompression model in the computer. Any dive started while there is remaining desaturation on your computer is considered a repetitive dive, meaning that Quad Air accounts for the

- pre-existing nitrogen load in your body.
- The no-fly time (**NO FLY**): this is the time during which an exposure to the reduced pressure inside the cabin of an airplane could cause decompression sickness. Quad Air employs, as recommended by NOAA, DAN and other agencies, a standard 12-hour (no-deco non-repetitive dives) or 24-hour (deco and/or repetitive dives) countdown. Hence you may find a situation in which the desaturation time is shorter than the no-fly time. This is simply the consequence of the desaturation time being calculated by the algorithm based on the actual dive profile, while the no-fly time is an accepted standard in the diving industry. Since the real effect of flying after diving has never been fully investigated, this approach fits with our philosophy.

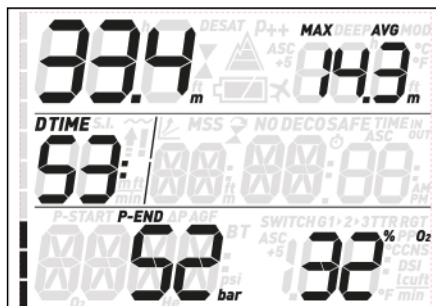


**WARNING**

Flying while Quad Air displays **NO FLY** can result in serious injury or death.

- The surface interval (**S.I.**): this is displayed from the moment the dive is closed (3 minutes after surfacing) for as long as there is remaining desaturation or no-fly time on the computer.
- In case of a dive violation, the corresponding symbol (⚠, ⚠) is shown.

The other contains a condensed log of the last dive: maximum and average depth in the top row, dive time in the middle row to the left, final tank pressure and set O2% in the bottom row. In addition, the bar graph shows the calculated nitrogen load in the leading tissue. You can use this to gauge your progress in getting rid of nitrogen as the surface interval grows. Quad Air continues to perform decompression-related calculations (nitrogen release), for as long as there is desaturation time left.



**3.5. DIVING WITH MORE THAN ONE GAS MIXTURE**

**WARNING**

- Diving with more than one gas mixture represents a much higher risk than diving with a single gas mixture, and mistakes by the diver may lead to serious injury or death.
- During dives with more than one gas mixture, always make sure you are breathing from the tank that you intend to breathe from. Breathing from a high oxygen concentration mix at the wrong depth can kill you instantly.
- Mark all your regulators and tanks so that you cannot confuse them under any circumstance.
- Before each dive and after changing a tank, ensure that each gas mixture is set to the correct value for the corresponding tank.

Quad Air enables you to use up to three gas mixtures during the dive (air and Nitrox only). The three mixtures are labeled G1, G2 and G3 and must be in ascending order of oxygen content, i.e. G1 has the lowest oxygen concentration, G2 an intermediate value, and G3 has the highest oxygen concentration of the three. If you are diving with only two mixtures, you will be utilizing tanks G1 and G2.

**WARNING**

It is not possible to switch to a gas at a depth at which the oxygen partial pressure for that gas is greater than the set maximum value.

**NOTE**

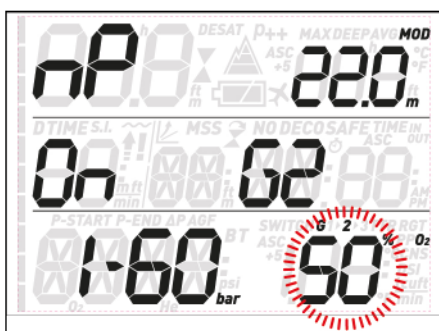
- If you dive using just one gas, select G1 and deselect the other two.
- For dives with two gases, select G1 and G2 and deselect the third.
- When enabling G2 and G3, you must first define G2 and then G3.
- You cannot activate G3 without first having activated G2.
- G2 cannot have an oxygen percentage higher than G3.
- If you set G2 to OFF, G3 will automatically be set to OFF also.
- The MOD for G2 and G3 is the switch depth for the corresponding gas. This is what Quad Air uses for its calculation, alarms and suggested switch points.

**3.5.1. SETTING MORE THAN ONE GAS**

The characteristics of the gases must be entered in the computer before the dive. It will then be your responsibility to tell Quad Air which gas is currently being used during the various phases of the dive.

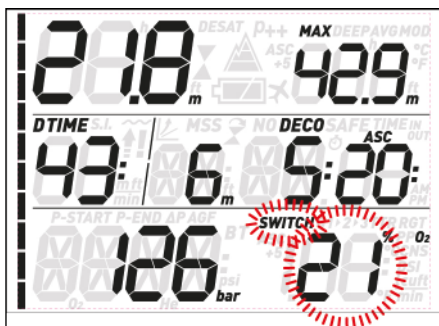
To use multiple gases, you will need to enable the gases and set the oxygen percentage and the ppO<sub>2</sub>max for each one. This is done in the same way as for G1, with the difference that for G2 and G3 you can turn a gas **ON** or **OFF**. Keep in mind that the MOD for G2 and G3 is the depth at which Quad Air will prompt you to perform the gas switch (see section 3.5.2 below). To enable G2 press the **UP** button from

the **G2 OFF** display. You will now see **G2 ON**, a value of oxygen concentration,  $ppO_2$  and MOD. Proceed as you would for G1 until you get to the **G3 OFF** screen. Either press **ESC** if you have finished setting gases, or press the **UP** button to advance to the **G3 ON** display and setting of G3. As already seen for G1, a "P" or an "nP" on the display indicates whether a pairing to a tank module exists or not for that channel.

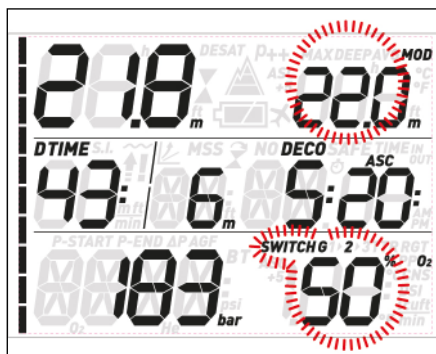


### 3.5.2. SWITCHING GAS

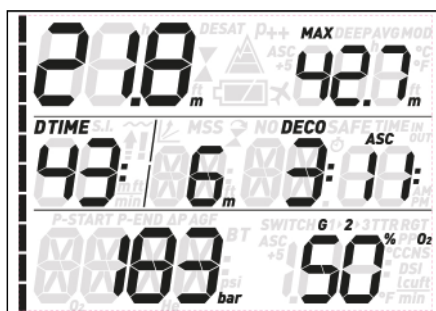
Quad Air always begins the dive with G1, which has the lowest percentage of oxygen. When during the ascent you reach the depth corresponding to the MOD of G2, Quad Air sounds an audible signal and the oxygen concentration of G1 together with the word **switch** start to blink in the lower right corner.



Press either of the lower buttons while this indication is blinking to initiate the gas switch: the oxygen percentage of G2 starts to blink in lieu of that of G1, and in the top right corner the MOD of G2 is displayed, also blinking.



Press and hold either of the lower buttons to confirm the switch to G2: the set oxygen concentration will be displayed steadily in the lower right corner of the screen, and within 20 seconds the ascent time is updated to reflect the higher oxygen concentration in the breathing gas.



If you press either of the lower buttons while G2 is blinking, the next available gas in the list will be displayed instead. This will be G1 if only two gases are set or if you are deeper than the MOD of G3, or G3 if you have set three gases and are shallower than the MOD of G3.

#### NOTE

- Quad Air will allow the change only if the depth is shallower than the MOD corresponding to the set  $ppO_2$  max.
- Quad Air will not allow the gas switch if you are deeper.
- The automatic blinking of the oxygen concentration of G1 lasts only for 20 seconds. You can however initiate the gas switch at any time by pressing and holding either of the lower buttons when the oxygen concentration is displayed in the lower right corner, then switch to G2 as long as your depth allows the gas to be activated.
- The same process is repeated when you approach the MOD for G3 with G2 blinking instead of G1
- If you have set G1, G2 and G3 and have not switched from G1 to G2, once you reach the MOD for G3 the oxygen concentration of G1 will again blink to alert you of the possibility of switching gas.

### 3.5.3. SPECIAL SITUATIONS

#### 3.5.3.1. SWITCHING BACK TO A GAS MIXTURE WITH LOWER OXYGEN CONCENTRATION

There may be situations in which you have to switch back to a gas with lower oxygen concentration than what you are currently breathing. This can happen for instance if you want to descend deeper than the MOD for the

current gas, or if for instance you have run out of gas in G2 during the decompression. To do so, simply press either of the lower buttons until the oxygen concentration is displayed in the lower right corner, then press and hold either of the lower buttons to initiate the gas switch. From here on the procedure is the same as described in 3.5.2.

#### 3.5.3.2. SUBMERGING BELOW THE MOD AFTER A GAS SWITCH

If after having switched to a gas mixture with a higher oxygen concentration you inadvertently drop again below the MOD for that mixture, the MOD alarm will immediately go off. Either switch back to a gas mixture suited for that depth, or ascend above the MOD for the gas mixture you are breathing from.

### 3.6. BOTTOM TIMER MODE (BT)

When Quad Air is set to **BT** mode, it will only monitor depth, time, tank pressure and temperature, and will not carry out any decompression calculation. Maximum displayed dive time in gauge mode is 99 minutes. You can only switch to bottom timer mode if the computer is completely desaturated. All audible and visual alarms, other than the low battery alarm and tank reserve, are turned off.

#### WARNING

Dives in bottom timer mode are performed at your own risk. After a dive in bottom timer mode you must wait at least 24 hours before diving using a decompression computer.

During a dive in bottom timer mode, the following information is displayed:

- current depth
- temperature
- stopwatch
- dive time
- tank pressure
- TTR
- in case of an ascent: ascent speed [in m/min or ft/min].

Press either of the upper buttons to toggle between max depth, average depth, temperature and an empty field. Press either of the lower buttons to bring up the time of day in lieu of the dive time (the display reverts back to dive time after 4 seconds) If more than one tank module has been paired, the lower button sequence includes also the active tank module (G1, G2 or G3).



When this is displayed, press and hold either of the lower buttons to start the manual gas switching sequence. Since there is no **MOD**



associated to any tank module this can be done at any depth.

From any other display, pressing and holding either of the lower buttons restarts the stopwatch.



If also the average depth is displayed, pressing and holding either of the lower buttons resets also the average depth.



### 3.6.1. DIVE VIOLATION INDUCED BOTTOM TIMER MODE

The following violations can occur during an Air or Nitrox dive:

- Uncontrolled ascent.
- Missed deco stop.

In case of a violation, Quad Air will restrict the use of Air and Nitrox mode for 24 hours, and will only allow operation in bottom timer mode.

## • 4. TAKING CARE OF QUAD AIR

### 4.1. TECHNICAL INFORMATION

Pressure gauge function

The pressure gauge integrated in the Quad Air dive computer has been tested and CE certified by RINA, notified body 0474, located in Genova, Italy.

The pressure gauge is a Category III device as defined under European Directive 89/686/ CEE, and complies with the specifications set out in the harmonized European Standard EN250 for use with air compliant with Standard EN 12021 (oxygen content of 21%).

The EC certification process and verification of the operating performance of the pressure gauge in the Quad Air dive computer under standards EN250 are understood to be applicable to a maximum depth of 50 m below the surface.

The Quad Air dive computer can be used in cold water (water at temperatures below 10°C).

Marking

The instrument markings are located on the tank module, and consist of the following:

- working pressure rating: 300 bar / 4,350 psi;
- reference standard: EN250;
- reference marking: CE 0474.

The conformity marking indicates compliance with the essential health and safety requirements as per attachment II D. and 89/686/EEC. The number alongside CE identifies RINA, notified body 0474, located in Genova, Italy, authorized to inspect the finished product under art. 11 B D.e. 89/686/CEE.

Operating altitude:

- with decompression – sea level to approximately 3700m/12100ft
- without decompression (gauge mode) – at any altitude

Decompression model: RGBM Mares-Wienke (10 tissues)

Depth measurement:

- Max displayed depth: 150m/492ft
- Resolution: 0.1m until 99.9m and 1m at depth deeper than 100m. Resolution in ft is always 1ft
- Temperature compensation of the measurement between -10 °C to +50 °C / 14 °F to 122 °F
- Accuracy from 0 to 80m/262ft: 1% ±0.2m/1ft

Temperature measurement:

- Measurement range: -10 °C to +50 °C / 14 °F to 122 °F
- Resolution: 1 °C / 1 °F
- Accuracy: ± 2 °C / ± 4 °F

Clock: quartz clock, time, date, dive time display up to 99 minutes

Oxygen concentration: adjustable between 21% and 99%, ppO<sub>2</sub> max range between 1.2 and 1.6bar

Logbook memory: 35 hours of dive profile at 5-second sampling rate

Operating temperature: -10 °C to +50 °C / 14 °F to 122 °F

Storage temperature: -20 to 70 °C / -4 to 158 °F

Display:

- Diagonal: 70 mm / 2 3/4"
- Mineral glass

Power supply:

- Quad Air:
  - CR2450 user-replaceable battery
  - battery life: 100-150 dives. Actual battery duration depends on the usage of the backlight and the water temperature.

### 4.2. MAINTENANCE

The tank pressure gauge and the parts of this product used to measure tank pressure should be serviced by an authorized Mares dealer every other year or after 200 dives (whichever comes first). In addition, the depth accuracy should be verified by an authorized Mares dealer every two years. Aside from that, Quad Air is virtually maintenance free. All you need to do is rinse it carefully with fresh water after each dive (avoid any chemical products) and replace the battery when needed. To avoid possible problems with your Quad Air, the following recommendations will help assure years of trouble free service:

- avoid dropping or jarring your Quad Air;
- do not expose Quad Air to intense, direct sunlight;
- do not store Quad Air in a sealed container, always ensure free ventilation.

#### NOTE

If you notice signs of moisture on the inner wall of the mineral glass, take your Quad Air immediately to an authorized Mares service center.

#### ⚠ WARNING

The mineral glass is not exempt from scratches resulting from improper use.

#### ⚠ WARNING

Do not blow compressed air onto Quad Air, because it could damage the pressure sensor area.

#### 4.2.1. REPLACING THE BATTERY IN QUAD AIR

Replacing the battery is a delicate operation, and requires close attention. We suggest that you visit an authorized Mares center. Mares declines all responsibility for any damage caused by replacing the battery.

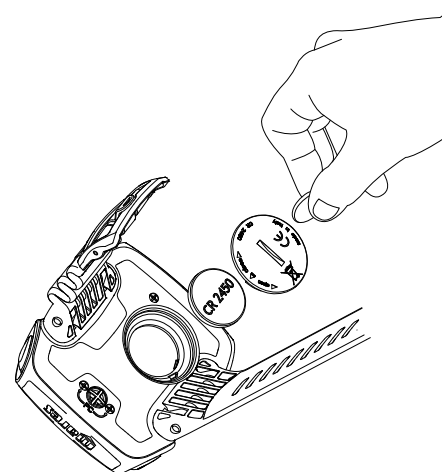
#### NOTE

Do not discard the old battery in the environment. Mares adopts a policy of respect for the environment, and urges use of the appropriate separated waste collection service.

#### ⚠ WARNING

Inspect the O-ring carefully, checking for any signs of damage, tearing or warping. If necessary, replace it with a new O-ring.

Unscrew the cover of the battery vane by using a coin that best fits into the slot. Remove the cover, remove the battery and insert the new battery paying close attention to the polarity. Check the o-ring and if needed replace it. Put the cover back in place and turn clockwise while pressing down until it's tight, without forcing too much.



#### NOTE

The battery compartment is sealed from the electronics, so that in case of a flooding of the battery compartment the dive computer is unharmed. In such event, you will need to rinse the compartment with fresh water, dry it thoroughly, replace the o-ring and put in a new battery.

## **⚠ WARNING**

Mares reserves the right to refuse to provide service under the warranty if the maintenance instructions are not followed.

### **4.3. WARRANTY**

Mares products are guaranteed for a period of two years subject to the following limitations and conditions:

The warranty is non-transferable and applies strictly to the original purchaser.

Mares products are warranted free from defects in materials and workmanship: components that, upon technical inspection, are found to be defective, will be replaced free of charge.

Mares S.p.A. declines all responsibility for accidents of any kind that result from tampering or incorrect use of its products.

Any products returned for overhaul or repairs under warranty, or for any other reason, must be forwarded exclusively via the vendor and accompanied with a proof of purchase slip. Products travel at the risk of the sender.

### **4.4. WARRANTY EXCLUSIONS**

Damage caused by water seepage resulting from improper use (e.g. dirty seal, battery compartment closed incorrectly, etc.).

Rupture or scratching of the case, glass or strap as a result of violent impact or blows.

Damage resulting from excessive exposure to elevated or low temperatures.

Damage caused by the use of compressed air to clean the dive computer.

### **4.5. HOW TO FIND THE PRODUCT SERIAL NUMBER**

To see the product serial number, enter the INFO submenu.

## **• 5. DISPOSAL OF THE DEVICE**



Dispose of this device as electronic waste. Do not throw it away with regular rubbish.

If you prefer, you can return the device to your local Mares dealer.





Algorithm

