

CRESSI

SINCE 1946



MICHELANGELO DONATELLO QUICK GUIDE



DOWNLOAD THE COMPLETE
CRESSI INSTRUCTION MANUAL
at: www.cressi.com/manuals

LONG LIFE



BATTERY

HIGH CONTRAST



DISPLAY

HIGH POWER



BACKLIGHT

EASY ACCESS



MENU

MULTI MODE

AIR
EAN
GAGE
FREE

Cressi reserves the right to make changes to the instrument without notice, based on the incessant technological upgrade of its components.

OPERATING BUTTONS



-  Short \ **NEXT (ONE STEP)**
-  Long (1 Sec.) \ **ENTER \ ESC**
-  Long (3 Sec.) \ **RETURN**

SWITCH ON

PUSH  TO SWITCH ON THE COMPUTER

PRE DIVE



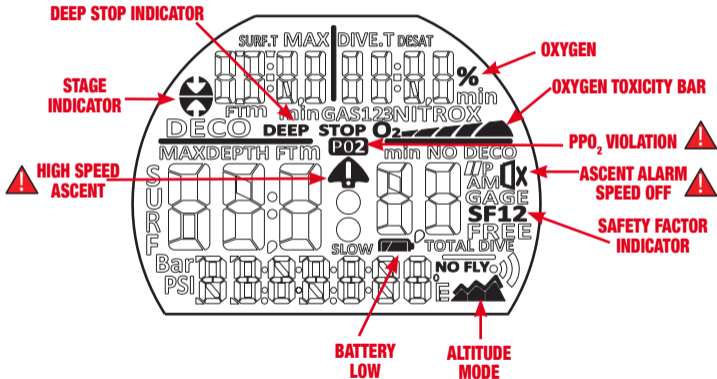
PRE DIVE (DESAT)*



THE SCREEN SCROLLS AUTOMATICALLY
EVERY TWO SECONDS

* In case of desat time, in mode AIR, FREE, GAGE the computer will alternate the pre dive screen to that of desat screen. In case of desat time in mode NITROX the computer will alternate the pre dive screen to that of GAS screen (DONATELLO) or GAS1/2 (MICHELANGELO).



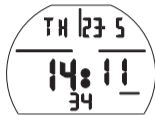


MAIN SURFACE MENU

PRE DIVE



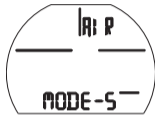
TIME



ENTER

RETURN

MODE SET



ENTER

RETURN

AIR (AIR
MODE)

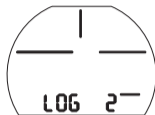
EAN (NITROX
MODE)

FREE (APNEA
MODE)

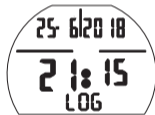
GAUGE (GAUGE
MODE)

○ Scroll the Mode
and confirm

LOGBOOK



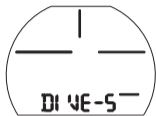
ENTER



RETURN



DIVE-SET



ENTER

AIR (AIR MODE)

- Deep stop ON /OFF
- Safety Factor SF 0/1/2
- Altitude ALT 0/1/2/3
- Depth ON/OFF
- PPO₂ 1.2 - 1.6

EAN (NITROX MODE)

- Deep stop ON /OFF
- Safety Factor SF 0/1/2
- Altitude ALT 0/1/2/3
- Depth OFF 50-10 m. (164-30 FT)
- % O₂ 21 - 50% GAS 1
- PPO₂ 1.2 - 1.6 GAS 1
- *% O₂ 21 - 99% GAS 2
- *PPO₂ GAS 2

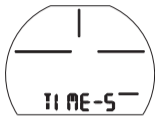
FREE (APNEA MODE)

- Surf Time Alarm **SURF-T** F1-F5 (surf time factor) /1':00"-10':00"/OFF
- Depth Alarm **DEPTH** 1 - 50 m. (3-164 FT)/OFF
- Step Depth Alarm **STEP** 2 - 25 m. (6-82 FT)/OFF
- Dive Time Alarm **DIVE-T** 0':10"-6':00"/OFF

Scroll the Mode and confirm

RETURN

TIME SET



ENTER

- SET H. 12/24
- SET HOUR
- SET MINUTE
- SET D-M/M-D
- SET DAY or MONTH
- SET MONTH or DAY
- SET YEAR

Scroll the Mode and confirm

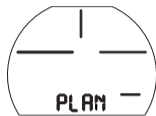
ENTER

Scroll +/- and confirm

ENTER

RETURN

PLANNING



ENTER



DEPTH NO DECO TIME

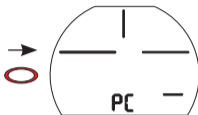
Scroll for INCREASE THE DEPTH

RETURN

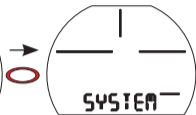
Not available in FREE MODE / GAGE MODE

MAIN SURFACE MENU

PC LINK



SETTING & INFO SYSTEM



ENTER



CONNECT THE INTERFACE
AND DOWNLOAD LATEST
SOFTWARE
UPDATES



SYSTEM MENU

CHANGE UNITS



ENTER

SCROLL TO
CHANGE UNITS

SCROLL FOR
INCREASE THE DEPTH

RETURN

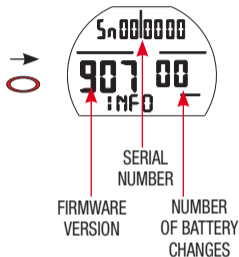
HISTORY



MAX
DEPTH
HISTORY

HOURS
IN USE
COUNTER

INFO



HIGH SPEED ASCENT ALARM



SCROLL TO CHANGE ON/OFF ALARM SPEED

RETURN

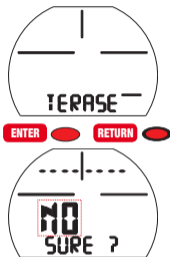


An ascent at too high speed increases the risk of decompression sickness! This function is strictly reserved for instructors who take full responsibility for the deactivation of the high speed ascent alarm (AL.SP).

In any event, when activating this function the computer will show a barred speaker icon during the entire dive.



TISSUE ERASE



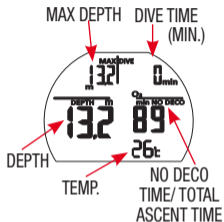
SCROLL TO CHANGE NO / YES, AND PUSH FOR 5 SEC. TO ERASE THE TISSUE



If you decide to erase the tissue nitrogen saturation using the T.ERASE function, the computer will not be able to calculate any successive dives in relation to nitrogen saturation! In any event, do not use this function if 48 hours have not passed since the last dive.

DIVE MENU

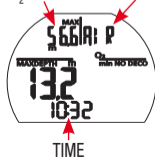
AIR



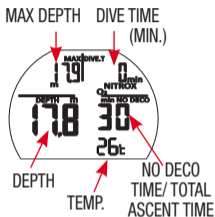
SCROLL ○

(Page 2)

PPO₂ MAX /
PPO₂ DEPTH MAX MODE

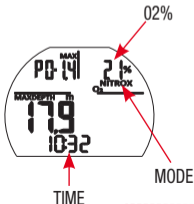


NITROX

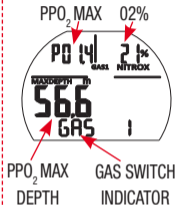


SCROLL ○

(Page 2)

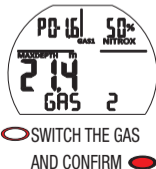


NITROX GAS SWITCH



ENTER ●

(Page 2)

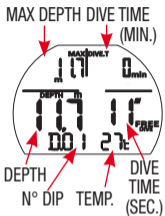


○ SWITCH THE GAS
AND CONFIRM ●

ONLY FOR MICHELANGELO

POST DIVE

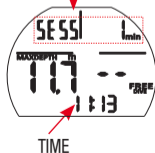
FREE



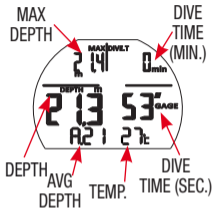
SCROLL

(Page 2)

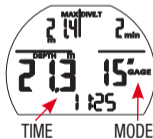
SESSION TIME



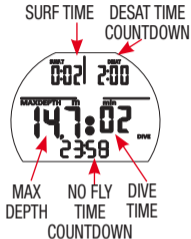
GAGE



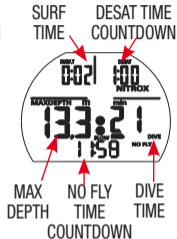
SCROLL



AIR



NITROX

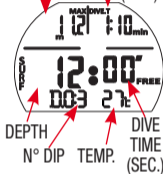


SWITCH OFF
AUTOMATICALLY IN 10 MIN.

SURFACE

FREE

MAX DEPTH DIVE TIME
(MIN.)



SCROLL TWO TIMES

TO END THE SESSION
(SURFACE)



SCROLL



YES / NO
and confirm



BATTERY



LOW BATTERY
(YOU SHOULD CHANGE THE BATTERY SOON)



YOU MUST CHANGE THE
BATTERY
(DIVE FUNCTION IS DISABLED)

Note: _____

CRESSI
SINCE 1946

Via G. Adamoli, 501 - 16165 GENOVA - ITALY
TEL. +39 010 830.79.1 - FAX +39 010 830.79.220
info@cressi-sub.it - www.cressi.com

